

## Specification sheet LX 460

### Parapet roof drainage systems Series 79/88 RAINSTAR<sup>®</sup>

#### Main drainage

Gravity flow

Silent Power

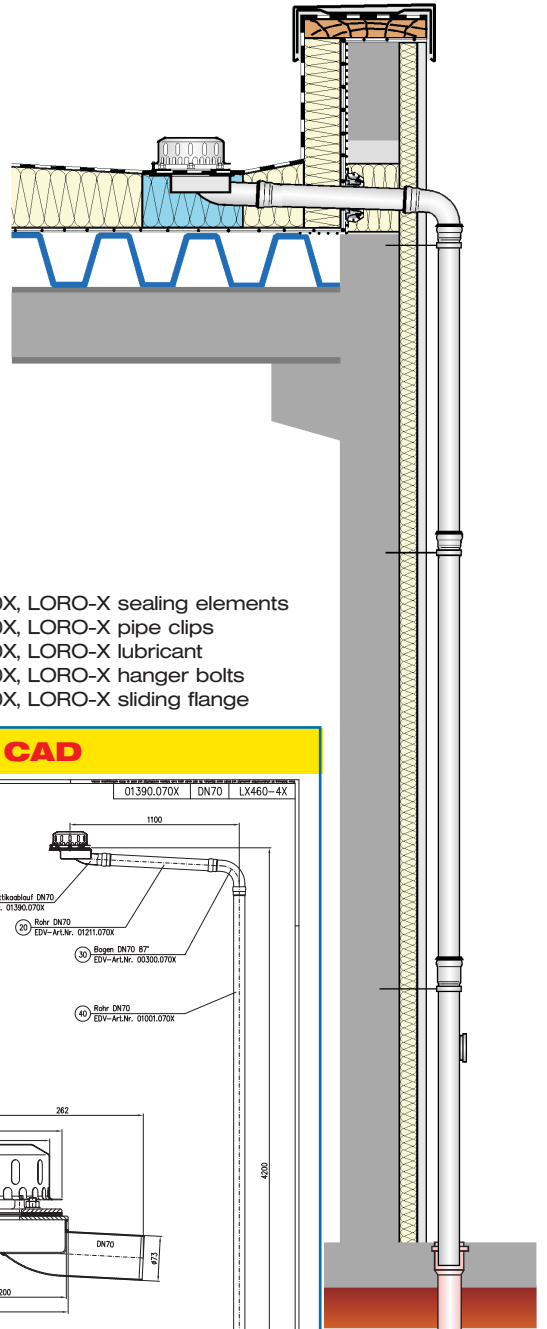
<b>Discharge rate:</b>	<b>5,2 l/sec</b>
<b>Water height:</b>	<b>35 mm</b>
<b>Roof penetration:</b>	<b>92 mm</b>
<b>Diameter:</b>	<b>DN 70</b>
<b>LX-Number:</b>	<b>LX 460</b>
<b>Weir height:</b>	<b>0 mm</b>
<b>Drain:</b>	<b>ventilated</b>
<b>Downpipe:</b>	<b>not ventilated</b>
<b>Downpipe height:</b>	<b>4,2 m</b>
<b>Drainage:</b>	<b>in sewer</b>
<b>Flange form:</b>	<b>Clamping flange</b>

#### LX 460 Piece list

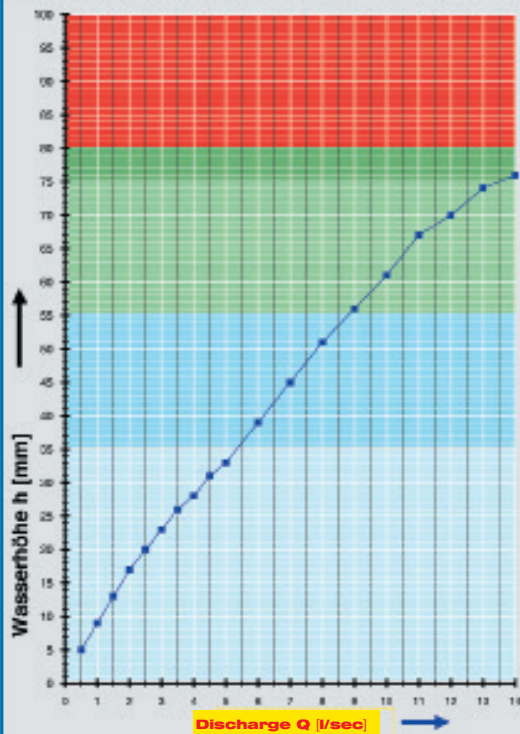
##### 1 x Art.-No. choose drain on page two!

- 1 x Art.-No. 01301.070X, LORO-X pipe with one socket
- 1 x Art.-No. 00350.070X, LORO-X bend
- 1 x Art.-No. 01101.070X, LORO-X pipe with one socket
- 1 x Art.-No. 01201.070X, LORO-X pipe with one socket
- 1 x Art.-No. 05510.070X, LORO-X stand pipe

- 5 x Art.-No. 00911.070X, LORO-X sealing elements
- 3 x Art.-No. 00973.070X, LORO-X pipe clips
- 1 x Art.-No. 00986.000X, LORO-X lubricant
- 3 x Art.-No. 09603.120X, LORO-X hanger bolts
- 1 x Art.-No. 13235.070X, LORO-X sliding flange

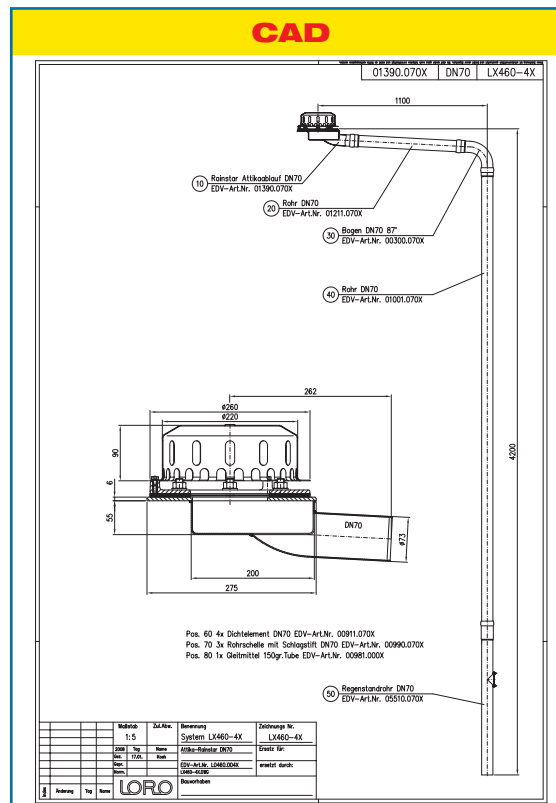


#### hQ - Head-Discharge curve



#### Systempower

#### CAD



#### Systemshape

Water height	mm	5	10	15	20	25	30	35	40	45	50	55	60	65	70	75
Discharge	l/sec	0,5	1,1	1,7	2,5	3,3	4,3	5,2	6,2	7,0	7,8	8,8	9,8	10,7	12,0	
		Silent			Silent Power				Power							

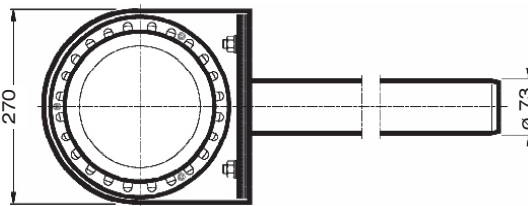
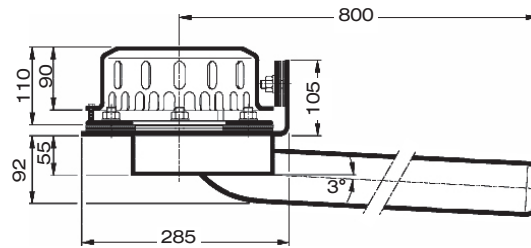
Choose drain for piece list on page one!

DN 70

**LX460-1X**

Drain Art.-No. 01372.070X  
Weight: 6,3 kg

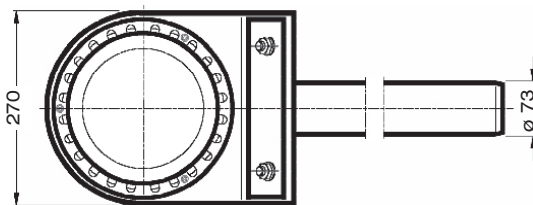
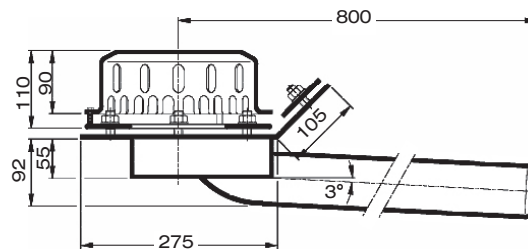
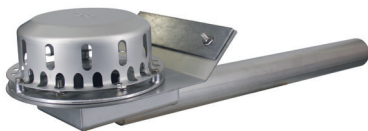
**Series 79 (RA)**  
**clamping flange 90°**  
for plastic roofing sheets



**LX460-2X**

Drain Art.-No. 01370.070X  
Weight: 6,2 kg

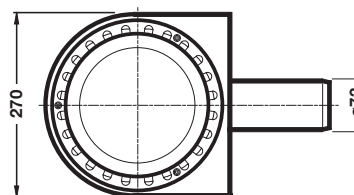
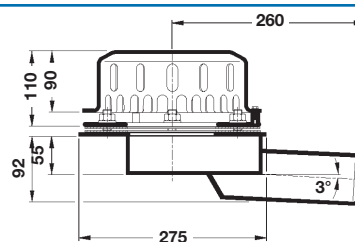
**Series 79 (RA)**  
**clamping flange 45°**  
for bituminous roofing sheets



**LX460-4X**

Drain Art.-No. 01390.070X  
Weight: 3,9 kg

**Series 88**  
**clamping flange**  
**without raised edge**  
for bituminous and plastic  
roofing sheets



**Heat tracing:** Lorowerk recommends to check all drains and pipes with regard to their frost-sensibility. Where necessary, these parts should be upgraded with heat tracing.